

GEMINI™ Avoidance System

"Designed by Scientists for Scientists"

Active/passive avoidance testing for rats & mice

GEMINI™ Avoidance System



GEMINI Avoidance System

SDI's GEMINI™ Avoidance System is designed for active and passive avoidance testing in both rats and mice. GEMINI is available in two configurations: Shock or Shock and Airstim. Conversion from rats to mice is possible in less than five minutes. GEMINI provides maximum flexibility in test paradigms by utilizing features such as non-heating LED house lights, laboratory standard cue lights, user selectable auditory stimuli, infrared photobeams and a quiet auto door.

GEMINI can be configured with up to 8 stations for testing large subject groups. Each station starts and runs independently making continuous testing quick and easy. Importantly, GEMINI can be easily expanded to accommodate multiple test stations, allowing rapid testing of a large number of subjects. Supported avoidance paradigms are: Passive Avoidance (Classic, Trials to Criterion, Continuous, Learned Helplessness) and Active Avoidance (Trials to Criterion, Continuous).

GEMINI takes full advantage of the Windows® operating system with data organization and management software that combines power and flexibility with ease of use. GEMINI utilizes a database to store all study results in a single file (table) format ready for export. This eliminates the need to cut and paste multiple files together in order to export study results to statistical packages.

Features & Benefits

- Cues include non-heating LED house lights, laboratory standard cue lights, user selectable auditory stimuli and quiet auto door
- Configure up to 8 stations for rapid testing of subjects
- Independent station start makes continuous testing quick and easy
- Easy-to-use, menu-based software assure reliable and accurate data
- All study data is stored in a database, providing quick and easy export
- Ability to run the system on a laptop or desktop computer

GEMINI™ System Components

GEMINI Avoidance System Components

The GEMINI Avoidance System includes the following:

- Active and passive avoidance software
- Test stations with 2 compartment enclosures and grid floor for rats (or mice), 16 photobeams, 2 "house" and 2 "cue" lights and 2 speakers for sound
- Connection to computer sound card
- SDI Animal Shocker with 8 unique outputs
- Auto door (for passive avoidance testing)
- USB Interface
- All necessary cables and power supply

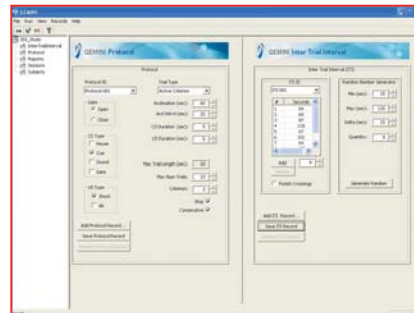
GEMINI Components & Accessories (optional)

You can add a variety of other SDI accessories and components to your GEMINI system including:

- SDI Air Puff Stimulation Unit (AIRSTIM™)
- Additional test stations
- Mouse passive avoidance start box
- Grid floors (for rats or mice)
- Isolation Cabinet

GEMINI TEST STATIONS

The GEMINI test station is a two-compartment enclosure with an interchangeable rat or mouse grid floor, 16 photobeams for precise location of the animal, two "house" and two "cue" lights, two speakers for sound, Auto Door and the SDI animal shocker - a solid state, feedback-controlled, constant current shocker with 8 unique outputs. SDI's GEMINI shocker is the only one of its kind to display the actual current being administered to the subject. Photobeams may be manually disabled to vary the required compartment entry distance.

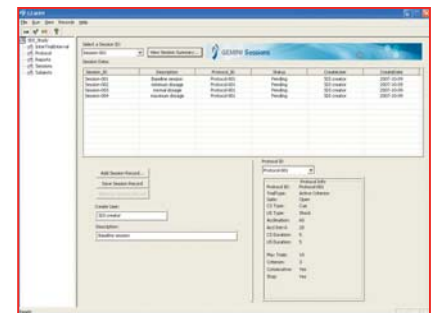


GEMINI Protocol Display

GEMINI SOFTWARE

GEMINI's easy to use menu-based software offers both passive ("Classic", "Trials to Criterion", "Continuous" and "Learned Helplessness") and active avoidance ("Trials to Criterion" and "Continuous"), full test diagnostics, runtime data display and a fully formatted report.

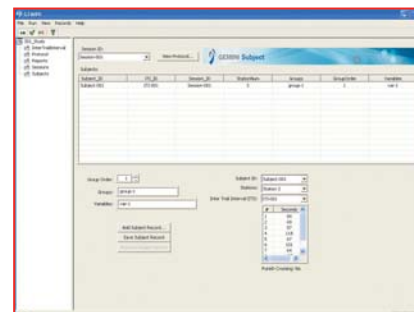
The GEMINI data is stored in a Microsoft® Access data base for easy transfer to other statistical programs.



GEMINI Sessions Display

USER-SELECTABLE TEST PARAMETERS

User-selectable passive avoidance testing parameters include subject identifiers, length of acclimation period, CS selection (house light, cue light, sound or any combination) and duration and US delay and duration. Delaying the US for a time after the Auto Door closes eliminates the association of the Auto Door and US by the animal providing a better learning experience. For active avoidance, you may select subject identifiers, number of trials, CS/US interval, inter-trial intervals (either fixed or randomly generated), length of acclimation period, maximum shock duration, stimuli to be used (house light, cue light, sound or any combination) and the option to punish inter-trial crossings. In either paradigm the user can select either white noise or a specific frequency of sound to be used for the sound CS.



GEMINI Subject Display

"Designed by Scientists for Scientists"

GEMINI System Specifications

Dimensions	Outside: 26"(W) x 13"(D) x 17 ¼" (H)	Inside: 9 ½"(W) x 8"(D) x 8"(H) (each side)
Weight	35 lbs.	
Material Composition	Acrylic and aluminum, stainless steel (Gate)	
Maximum # Stations	8	
# of Photobeams	16 infrared per enclosure	
Photobeam Spacing	1"	
Standard Cable Length	8 feet	
Certifications	CE and FDA 21CFR Part 11	
Stimuli Options	Cue lights, house lights, sound, shock, gate	
Color Options	Black	
Stainless Steel Grids	28 for rats, 62 for mice	

GEMINI COMPUTER REQUIREMENTS

Windows 2000/XP compatible computer system with available PCI slot. Minimum disk and memory sizes specified to support Windows 2000/XP are acceptable.

SDI CONFIGURED COMPUTERS

SDI offers high performance Cobalt™ Configured Computers that are pre-installed with the Windows® operating system and applicable SDI software. If required, SDI will pre-install PC Interface cards and all relevant drivers. Each computer is fully tested with your system prior to shipment. When your SDI system arrives, all you have to do is unpack it, attach the cables and begin testing.

SDI LEARNING TEST SYSTEMS

- Barnes Maze
- Eyeblick Conditioning
- Freeze Monitor™
- GEMINI™

FOR MORE INFORMATION

To learn more about SDI behavioral testing systems, please visit www.sandiegoinstruments.com. If you have any questions or would like to request a quote please call (858) 530-2600 or email us at sales@sandiegoinstruments.com.

To view the online GEMINI overview presentation, please visit: sandiegoinstruments.com/presentations.



San Diego Instruments, Inc.
6295 Ferris Square, Suite A
San Diego, CA 92121
Ph: 858-530-2600
Fax: 858-530-2646
www.sandiegoinstruments.com

©2009 San Diego Instruments. All rights reserved. SR-LAB is a trademark of San Diego Instruments, Inc. and SDI and the SDI logo are trademarks of San Diego Instruments, Inc. All other trademarks mentioned herein are property of their respective owners. Specifications are subject to change without notice. The equipment described herein is designed for research and educational purposes and is not intended for the diagnosis, alleviation, treatment, monitoring or prevention of disease, injury or handicap.

0209-GEMINI