



ANIMAL GRIP STRENGTH

Measure hindlimb and forelimb grip strength in rats and mice

SYSTEM COMPONENTS

- 1 or 2 Force Gauges
- Adjustable Grips
- Adjustable width animal channel
- Acrylic base
- Software with PC Interface
- User Manual
- All Cables and Connectors

PART NUMBERS

- 2325-0063
Platform with 1 Gauge and Grip
- 2325-0064
Platform with 2 Gauges and Grips
- 7500-0229
Adjustable Grip for Mice
- 7500-0227
Adjustable Grip for Rats



Grip Strength Platform with 2 gauges for High Throughput

PRODUCT OVERVIEW

San Diego Instrument's Animal Grip Strength System provides precise measurement of both hindlimb and forelimb grip strength in rodents. The system features horizontally and vertically adjustable gauge mountings to accommodate both rats and mice, and includes two sets of channel walls-tall for rats, short for mice. Constructed with a white acrylic platform, the device is designed for straightforward disassembly and cleaning, supporting rigorous laboratory standards. The dual gauge Grip Strength Platform facilitates high-throughput experimentation, enabling simultaneous assessment of hindlimb and forelimb strength during a single session. Measurement units include kilograms, grams, pounds, ounces and newton to support divers research protocols. The system utilizes single-ended gauges capable of recording fore in both compression and tension modes. Each gauge is equipped with a USB interface, and the included software automates peak force recording. The software includes a "Force Guide" which provides guidance for the user to refine their technique of handling the subject to maintain a more consistent application of force.

FEATURES & BENEFITS

The Grip Strength platform can be configured with single or dual gauges

With two gauges you get high throughput testing of the forelimb and hindlimb in a single pass

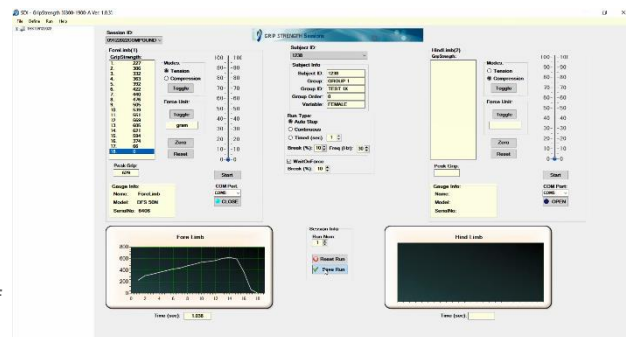
Platform designed to promote consistent movement during testing with the Force Guide display

Adjustable grip from 0-45 degrees to provide maximum flexibility.

Size specific grips for mouse and rats

Peak force values (tension and compression) automatically captured.

After completion of the test, the run info is displayed in both a chart and elapsed time. The chart provides a graphical display of the collected data from the run. The elapsed time graph displays the collected data which is dependent on your start setting. The software allows for the chart to be saved as a photo for later use. The data is stored in a database and can be exported into your statistical analysis program of your choice.



Power. Flexibility. Ease of Use.

ANIMAL GRIP STRENGTH SPECIFICATIONS

COMPUTER REQUIREMENTS

SDI offers high performance Configure Computers that are pre-installed with the Windows operating system, USB Drivers and applicable SDI software. Windows 10 compatible computer systems with one USB port.

ONSITE TRAINING

SDI offers onsite training to ensure understanding of how to operate the Grip Strength System

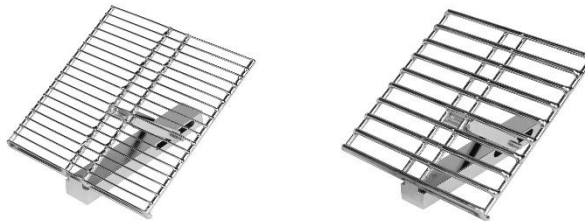
For more information on any of our products or services please visit us on the Web at:

www.sandiegoinstruments.com

Or contact us via email at

sales@sandiegoinstruments.com

Grip Strength Platform Dimensions	
Outside Dimensions	26" (W) x 9" (D) x 9.5" (H)
Animal Channel Dimensions	Adjustable 1" to 5" (W)
Gauge Mount Dimensions	Adjustable 5.5" to 8.25" (H)
Material Composition	Acrylic
Maximum # Stations	One
Standard Cable Length	3ft. for digital gauge with PC output
Digital Gauge Specifications	
Maximum load	11lbs
Data Readings	Newtons, Grams, Kilograms, Ounces, Pounds
Brand	Nextech
Maximum Gauges	Two
Animal Grip Dimensions	
Rat	
# of Rods	10
Diameter of Rods	.09"
Mouse	
# of Rods	19
Diameter of Rods	.04"
Material	Stainless Steel



SERVICES AVAILABLE

- Technical Support
- Installation and Setup
- Maintenance
- Application Support
- Hardware Support
- Guaranteed Warranty



9155 Brown Deer Rd Suite 8
San Diego CA 92121
Phone 858-530-2600
Fax 858-530-2626