



PHOTOBREAM ACTIVITY SYSTEM- HOME CAGE

SYSTEM COMPONENTS

4x8 Photobeam Mounting
Frame
Control Unit
Software
User Manual
All Cables and Connectors

PART NUMBERS

- 2325-0408
PAS Home Cage
Station
- 7500-0332
PAS Home Cage
Additional Station
- 7500-0333
PAS Home Cage
Rearing Frame



PRODUCT OVERVIEW

SDI's Photobeam Activity System-Home Cage (PAS-HC) provides an affordable and flexible solution for long term activity testing. PAS-HC utilizes a laboratory's standard transparent cages, thus reducing the cost of a system. The system can be configured with up to 64 test stations with locomotor frames or up to 32 test stations with the optional rearing frames. PAS-HC supports the rapid exchange of subjects in short studies, while affording the ability to run 24 hours a day for a full week without user intervention.

PAS-HC utilizes a 4x8 photobeam configuration to track the subject's path in its home cage. Optional features include rearing frames that are infinitely adjustable to accommodate subjects of different sizes. The PAS-HC Control Unit connects via USB allowing laptops to run the PAS-HC System. PAS-HC utilizes a database to store all study results in a single file in table format ready for export. This eliminates the need to cut and paste multiple files together in order to export study results to statistical packages.

FEATURES & BENEFITS

Configure up to 64 test stations for rapid testing of large subject groups

Ability to run 24 hours a day for a full week without user intervention.

4x8 photobeam configuration precisely tracks the subject's path

Accurately records ambulation movements, fine movements, rearing, and time stamped (x,y) positions

Real time reporting of activity

Ability to graphically view and play back the subject's path

All study data is stored in a database, providing quick and easy export

PAS DATA REPORTER

PAS-HC accurately records ambulation movements, fine movements, rearing (if option is present), and time stamped (x,y) positions. PAS-HC additionally reports central vs. peripheral counts, zone entries, time in zone, distance traveled, speed and resting time. Powerful software features provide the ability to graphically view and play back the subject's path in a choice of eight different speeds.

Power. Flexibility. Ease of Use.

PHOTOBREAM ACTIVITY SYSTEM-HOME CAGE

COMPUTER REQUIREMENTS

SDI offers high performance Configure Computers that are pre-installed with the Windows operating system, USB Drivers and applicable SDI software. Windows 10 compatible computer systems with one USB port.

ONSITE TRAINING

SDI offers onsite training to ensure understanding of how to operate the PAS Home Cage System

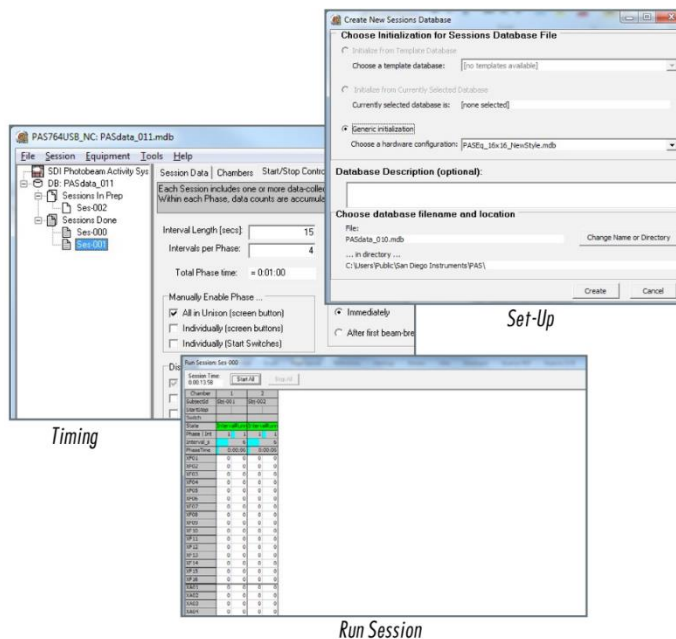
For more information on any of our products or services please visit us on the Web at:

www.sandiegoinstruments.com

Or contact us via email at

sales@sandiegoinstruments.com

Frame Dimensions	
Inside	10" (W) x 18.5" (L)
Outside	11.5" (W) x 20" (L)
Weight	4 lbs.
Composition	Stainless Steel Frames
# of Photobeams	4 x 8
Photobeam Spacing	1.937"
Optional Rearing Frame	Same as above with 8 beams 1" apart
PAS Control Box	
Dimensions	14/5" (W) x 10" (D) x 4/5" (H)
Maximum # Stations	32
Standard Cable Length	12 ft
System Certifications	
	CE
	FDA CFR Part 11 (6300-0102)



SERVICES AVAILABLE

- Technical Support
- Installation and Setup
- Maintenance
- Application Support
- Hardware Support
- Guaranteed Warranty



9155 Brown Deer Rd Suite 8
 San Diego CA 92121
 Phone 858-530-2600
 Fax 858-530-2626